

This newsletter is produced by Wandsworth Council and Redrow Homes to help keep you informed about the regeneration of your estate

Plans taking shape



Architect's impression of the view east on Harbridge Avenue



Architect's impression of the view east on Danebury Avenue

Plans for the regeneration are now available in Roehampton Library, showing the evolving design proposals.

A3 booklets showing the information displayed at the September and October consultation sessions in the Parish Hall, staffed by Redrow Homes consultants and council staff are now available to view in the library.

All feedback will be used to help shape the plans going forward over the next few months. You can also view the information online at:



Workshop held during September in the parish hall

www.AltonEstateRegen.co.uk/thank-you-for-attending-our-open-sessions/

The proposals are based on the 2014 Alton Area Masterplan as well as recent workshops focusing on specific issues, such as parking; housing design; public transport; and local shops, which took place in the parish hall last month.

A wide range of views and opinions were raised at the workshops and exhibition drop-in sessions, such as:

- Bricks as well as a variety of materials should be used to prevent the estate looking dull, though this shouldn't necessarily mean bright primary colours
- The library service should continue while the new library facility is built, which should also include space for community groups to meet
- Improvements for the sheltered housing clubroom at Minstead Gardens

A phasing plan is being worked on by Redrow Homes with the council accounting for the needs of all council tenants and owner-occupiers, to ensure where possible those impacted by demolition will be rehoused in the development area.

This will be included within a development timetable for the scheme, which is expected to be available in early 2018.

Overall, the regeneration is set to provide approximately 1,000 new homes, including newly built re-provided homes for all secure council tenants and owner-occupiers, more council housing, an improved park, more shops, a community hub and new library.

There will be further consultation in early 2018 before the planning application is submitted.

First new homes update

To enable households in later stages to move directly into their newly-built homes, Sherwood Lodge, on Bessborough Road, will be redeveloped to rehouse residents in the regeneration's first phase.

A report approved by the council's Executive on 18 September outlined how ten family-sized, multi-bedroom flats can be built onto the site of Sherwood Lodge and its adjoining resident car park by Redrow Homes, to the same high standard as those to be built in the regeneration area.

Subject to planning permission, the development would include maisonettes with rear gardens. The access road behind Petersfield Rise shops will be maintained as well as providing new parking for the new homes. Consultation will begin in November 2017 and will be advertised widely.

The sheltered housing at Minstead Gardens is set to be refurbished, and consultation is under way to discuss proposals with residents. Examples of potential extensions to the properties, and internal layouts, were exhibited at Roehampton Parish Hall in September and October.

Different options of how rooms could be laid out were discussed recently with residents, all of which include an extension to increase overall floor space from 34sqm to 50sqm.

Consultation will continue, including with Historic England, before any planning application is submitted.



Architect's impression of the proposed development at Bessborough Road





Football focus

Over the years Roehampton has been home to teenage footballing talent now playing for Fulham and Cardiff City, so it was only a matter of time before the area got its own club for children and young people.

DARA FC is based at Focus Hall, in Minstead Gardens, and was established by Jake Shepherd-Fox and Ashley Carley in 2014 after they had set up a team for adults a few years earlier.

Jake said: "We thought we could do something for the community and for the area. We set up a trial and we had 80 kids there, and we thought we can't fit them all in one team!"

Home games take place at the Colliers Wood United football grounds, just round the corner from Putney Vale on the A3, and minibus transport from Focus Hall is provided by Portswood Place-based charity Regenerate. The team has gained Charter Standard status from the Football Association (FA), with all coaches qualified, First

Aid-trained and Criminal Records Bureau (CRB)-checked. Training is every Tuesday, 5-6.30pm at Dover House playing fields.

The team plays in the London County Saturday Youth Football League, and the Epsom and Ewell Youth Football League, and have so far won an under-12s division.

Ibrahim Meite grew up in Roehampton, and signed with Cardiff City FC last year. Back in February he paid a visit to the council's youth centre on Holybourne Avenue and gave a masterclass in footballing skills to encourage the next generation of players. Twin brothers Ryan and Steven Sessegnon are also from the area, and they now play over the river at Craven Cottage for Fulham.

Ashley said that DARA FC has only just scratched the surface of the local talent in Roehampton and that they've had a few players take part in trials for clubs, although there have been no signings as yet.

Jake said: "Not everyone will be a professional footballer - but they see their idols who are people they actually know, they want to be them, and we're here to help them stay on the right path."

DARA FC is sponsored by Roehampton Cars, Foxtons and Sons Removals, Regenerate, and the DARA Focus Hall. If you'd like to get involved, contact Jake on 07583871386 or Ashley on 07508381522.

Young Roehampton voices

Safety was the main theme of a survey conducted by young people from the estate during the summer.

Young people go out in the daytime, or travel in pairs or groups to feel safe, the report by services users of

the Base youth centre, on Danebury Avenue, stated.

Most respondents felt safe where they live, though alleyways and around the library were listed as areas where they felt uncomfortable travelling in.

Asked how the regeneration would affect them, responses included transport delays; the estate and community changing; and that

Roehampton would be safer.

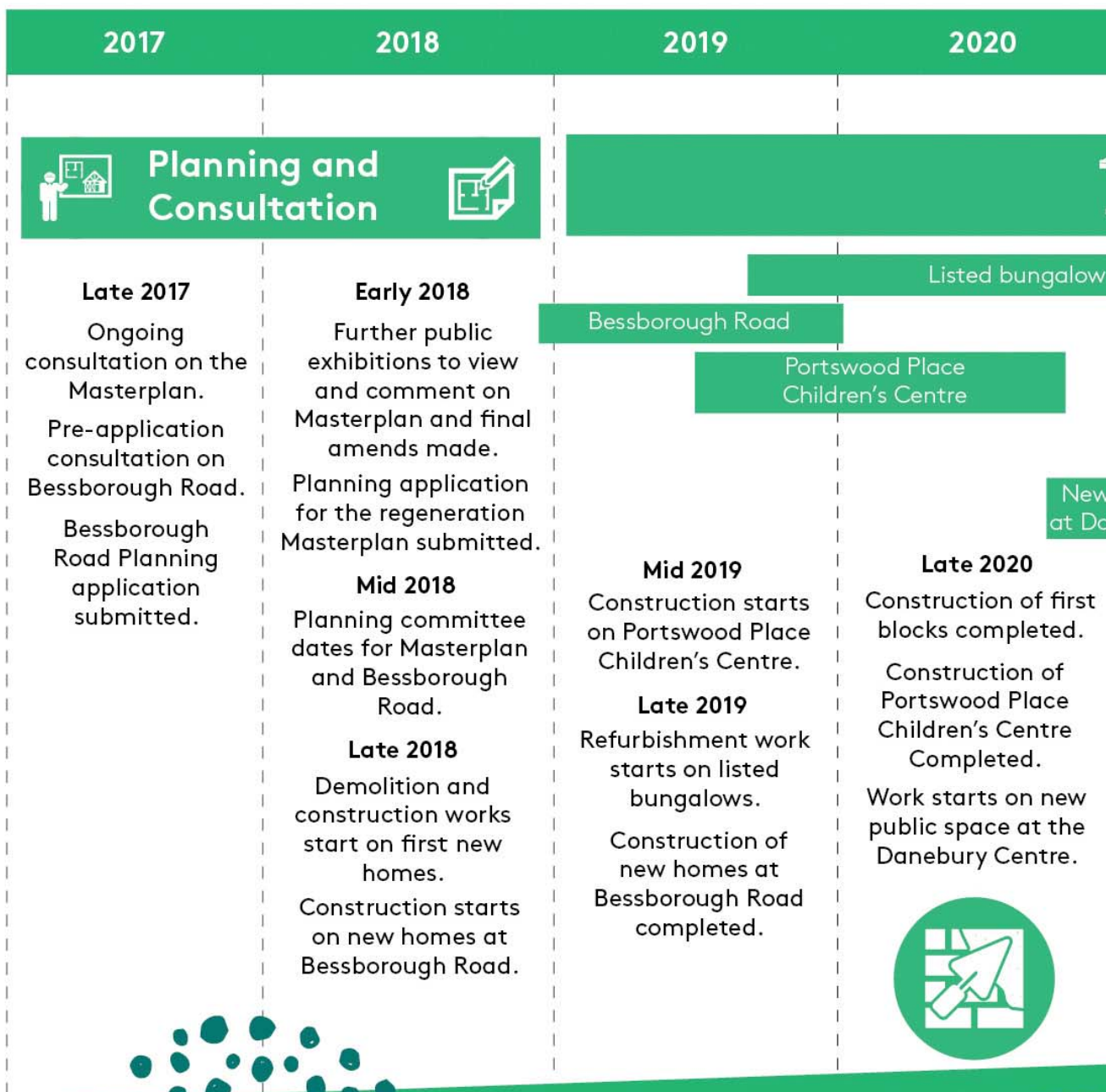
Among the new shops and facilities the area's younger residents would like to see were a Sainsbury's; Primark; a Judo club; and more parks.

However, they were not keen on betting shops; Waitrose; H&M; chicken shops or chip shops.

The full report is available at the Base.

REGENERATION TIMELINE

Please Note: This is an indicative timeline, subject to change as the project

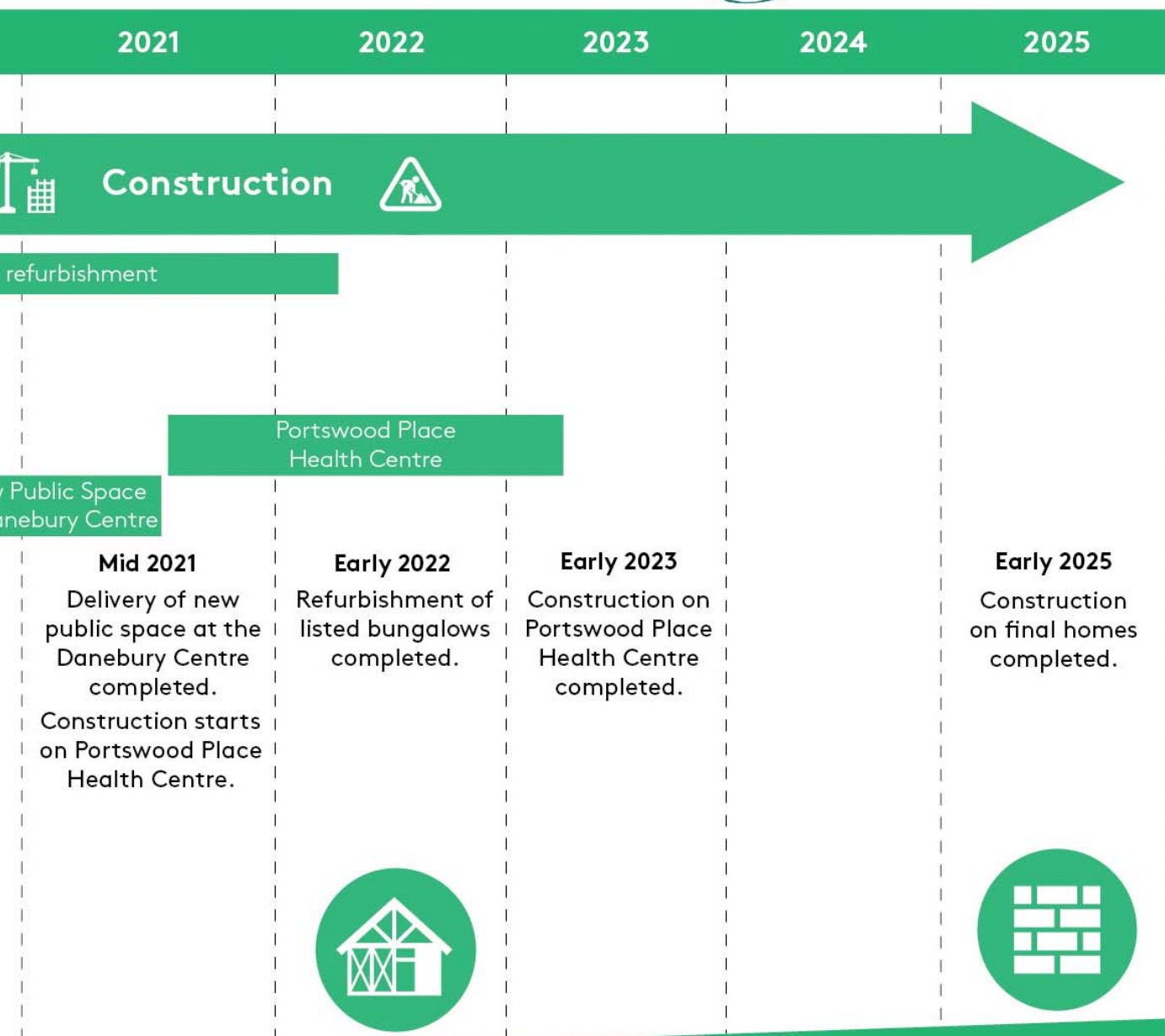




THE ALTON ESTATE

2017

progresses.



Roehampton success in getting back to work

Roehampton residents have benefitted from a two-month course to help improve their skills while looking for a job.

Roehampton residents have benefitted from a two-month course to help improve their skills while looking for a job.

The council's New Routes to Work support programme took place during the past two months at Roehampton Parish Hall, and on 31 August participants came together at a graduation ceremony.

New Routes to Work covers improved CV writing; application forms; interviews; and job searches, as well as boosting confidence and motivation. Afterwards, attendees continue to receive ongoing support in finding the right job.

Verona Smith had not been in employment for a while after previously working as a retail supervisor. Her objective was to find work at a similar level, and after starting the course she was accepted for a supervisory role at Travelodge.

She said that she found New Routes to Work "enjoyable, very helpful and [it] gave me the opportunity to look at myself and learn new things about myself. The support provided is amazing!"

It was the first time that the course, delivered by the council's Work Match jobs brokerage, had been held in the Roehampton area.

Roehampton's Alton estate is being regenerated by the council and partner Redrow Homes, with new homes being built for all secure tenants and owner-occupiers, as well as more council homes for social rent; additional housing for sale; a new library and improved retail; an improved park; and community hub.

Cllr Ravi Govindia, Leader of Wandsworth Council, said: "In Wandsworth, our approach is that as the homes in an area are improved through regeneration, the quality of life for local people is also improved.

"Work Match has helped more than 700 residents across the borough into employment and training, and through the regeneration this can include construction as well as decorating, security, site office administration, and more."

Work Match is based part-time at Roehampton Parish Hall - booking is currently by appointment only, so please contact: (020) 8871 5191 or email wandsworthworkmatch@wandsworth.gov.uk putting the word Roehampton in the subject line of your email.



Verona Smith





Free debt and money advice in Roehampton

Do you need help with rent arrears, or debt from Housing Benefit or Council Tax? Come along to free advice sessions at the Western Area Housing Office, Holybourne Avenue, Alton estate.

Confidential advice is available on issues such as rent arrears; money management; and debt, for example from Council Tax; sales catalogues; loan sharks; store cards or utility bills.

No appointment is necessary, and residents are invited to come along between 10am and 4pm on 27 November; 27 December; 29 January 2018; 26 February; 26 March; and 30 April 2018, with more sessions to follow.

Tenants who have used the service have found it very useful. A Roehampton mother (pictured, but who did not wish to be named), had built up high rent arrears and was unaware that help was available.

She said: "This service is fantastic, I never believed I would be able to get any benefits but, to have it backdated to last year is unbelievable. I am so grateful, I now have all my benefits in payments and have no stress of rent."

The advice sessions are part of the council's programme of support to

help people get on in life through a range of services including financial advice; youth mentoring; employment and training initiatives; as well as cultural and sporting opportunities.

This works in tandem with proposals by the council and partner Redrow Homes to regenerate the Alton estate in Roehampton, with newly-built homes for all secure council tenants and owner-occupiers; a new library and retail offer; an improved park; and community hub.

You can contact the team directly on **(020) 8871 6953** or email your enquiry to: **financialinclusion@wandsworth.gov.uk**



Get Out Get Active Roehampton!

Local people of all ages are being asked to take part in a new sport and physical activities initiative in Roehampton. The intention of Get Out Get Active is to establish regular exercise and sport in community venues across the Roehampton area, including the Alton estate. All sessions are aimed at complete beginners, give it a go!

Free beginners jogging group:

Tuesday 5.45-6.30pm,
from Café Joy,
49 Danebury Avenue,
Roehampton
SW15 4EN

Free lunchtime swimming (men only):

Tuesday 12.30-1.30pm,
Putney Leisure Centre,
Dryburgh Road,
Putney
SW15 1BL

Back to netball (women only):

Monday 8-9pm,
Roehampton Sports
and Fitness centre,
Laverstoke Gardens
SW15 4JB;
£3 per session or 6 weeks for £10

For more information on any of the activities follow

@GOGARoehampton on Twitter
or like **www.facebook.com/gogaroehampton**



Roehampton Outdoor Art Movement (ROAM)

We are a group of local residents, businesses and schools working together to create dynamic, accessible, creative and cultural programming for Roehampton.

We believe that the collective power of the group will help to make extraordinary things happen in the area.

Support us by following us here: **@RoeArts** or here: **www.facebook.com/RoeArts**

ROAM is currently looking for estate-based artists to work with. If you live on or near to the Alton Estate and consider yourself to be an artist or creative practitioner please get in touch: **ROAMovement@gmail.com**

WHAT'S ON: Minstead Gardens

Over 50s choir and line dancing:

Come along to the Minstead Gardens sheltered housing clubroom to take part in some fun activities and make new friends.

Every Monday, 1.30-2.30pm, an over 50 choir get together to sing songs from the swinging sixties – it costs £1 per session and includes expert tuition, with tea and biscuits. No experience is necessary!

Every Thursday, line dancing classes take place, 10-11am for beginners, and 11-12pm for those more experienced. Sessions cost £2.

For more information, contact **Elaine Curley** or **Simone Farr**, at Wandsworth Council's sheltered housing services community development team, on **07956 248057**.

Jobs and training

The council's Work Match service is available at Roehampton Parish Hall to help local people into employment.

Staff will know about local vacancies, help with writing CVs and covering letters, applying for jobs, and preparing for interviews.

Workmatch also delivers the New Routes to Work training course for people low in self-confidence or long term unemployed.

Booking is currently by appointment only, so please contact

(020) 8871 5191 to do so or email

wandsworthworkmatch@wandsworth.gov.uk

putting the word Roehampton in the subject line of your email.



S O C I A L M E D I A

Join the conversation on Facebook and Twitter



For regular updates join the Alton estate regeneration group on Facebook, or follow **@AltonMasterplan** on Twitter.

Phone: 020 8871 6207 or email: roehampton@wandsworth.gov.uk

[@AltonMasterplan](https://twitter.com/AltonMasterplan) Alton Estate regeneration (and ask to join)

www.wandsworth.gov.uk/roehampton

