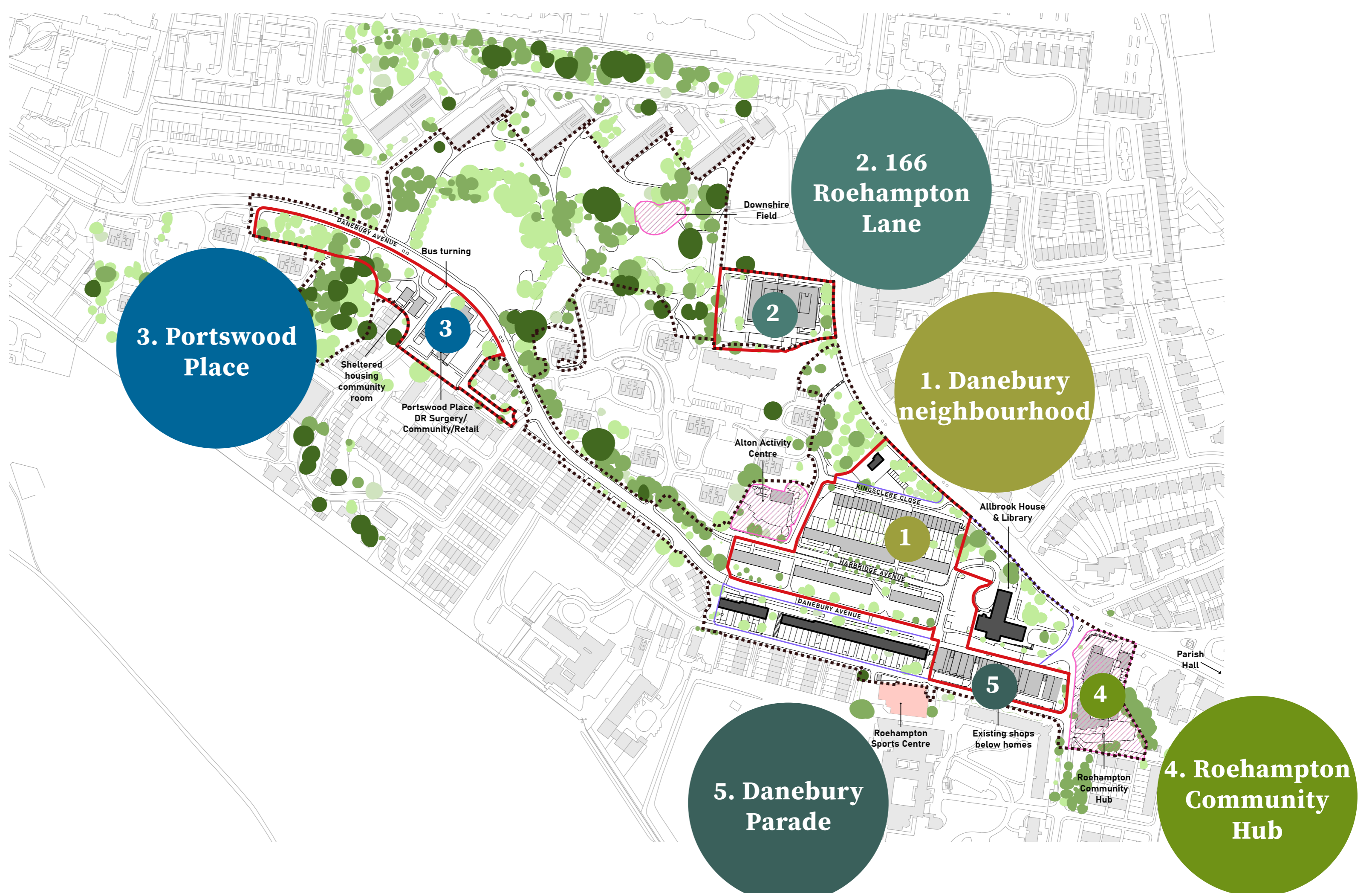


Renewal areas

Everything within the redline areas is being looked at as part of the renewal:

1. Danebury area
2. 166 Roehampton Lane
3. Portswood Place
4. Roehampton Community Hub*
5. Danebury Parade

* This site was originally outside of the renewal area, but it has now been included due to the prominence and landmark nature of the site.



Design Progress

When we came to see you at the end of 2024 we collected lots of your feedback on our initial design thoughts.

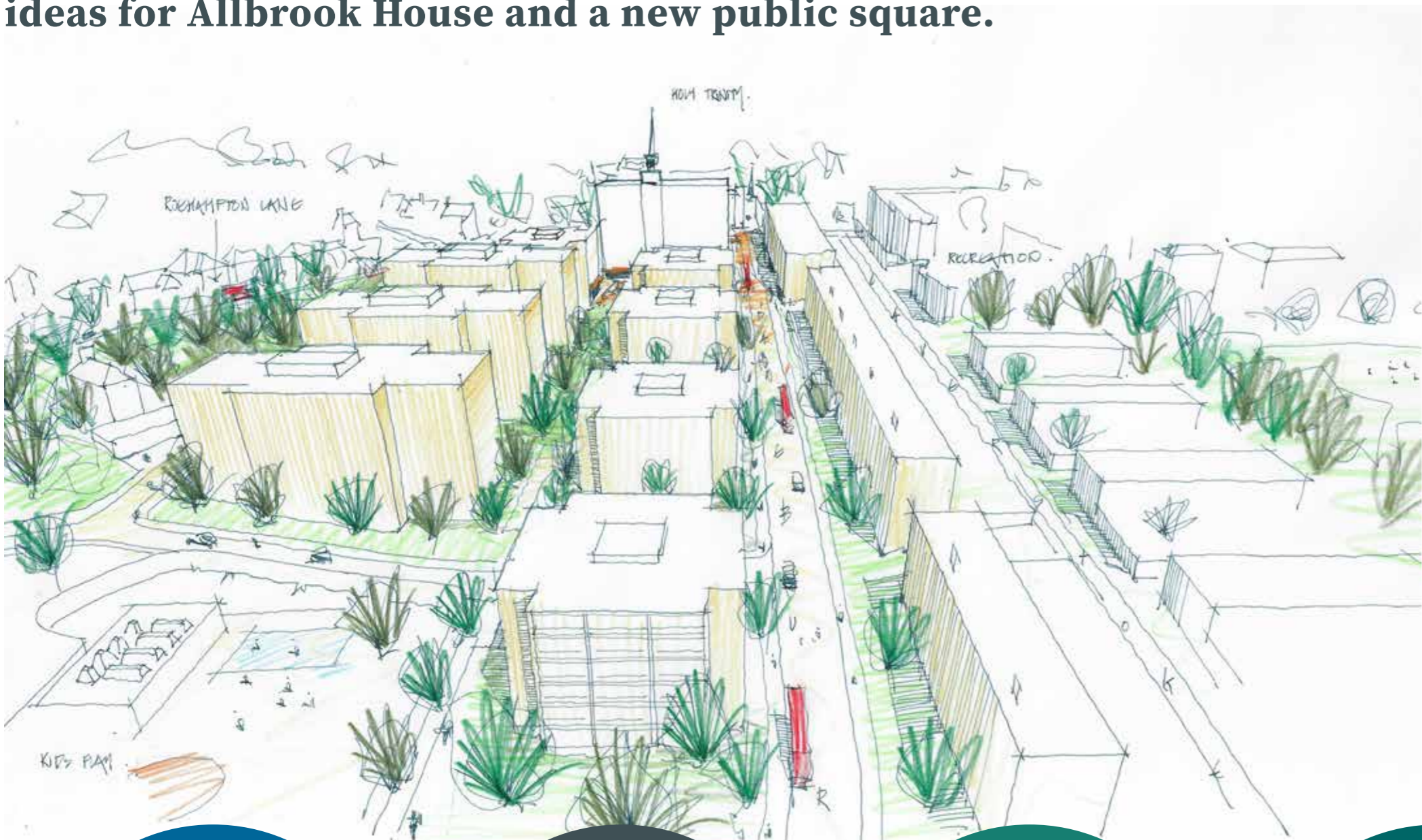
We have also met lots of residents, community groups, organisations that are based on the Alton, people who work here, schools and neighbours and we have listened to everything that you have said.

We have developed our thinking and we have incorporated as many of your comments as we can to make the best design possible.

We will continue to meet with you and show design progress over the next few months.



We showed some initial sketches, models and images of other places to see which designs you preferred: some sketch ideas for Allbrook House and a new public square.



You told us you preferred pavilion buildings set in the landscape

You said parking is a major issue along with traffic on Danebury Avenue

Lots of people liked the idea of a new public square next to Allbrook House

Accessibility was raised by many residents including those with additional needs

Biodiversity was discussed, with wildlife and trees a discussion point

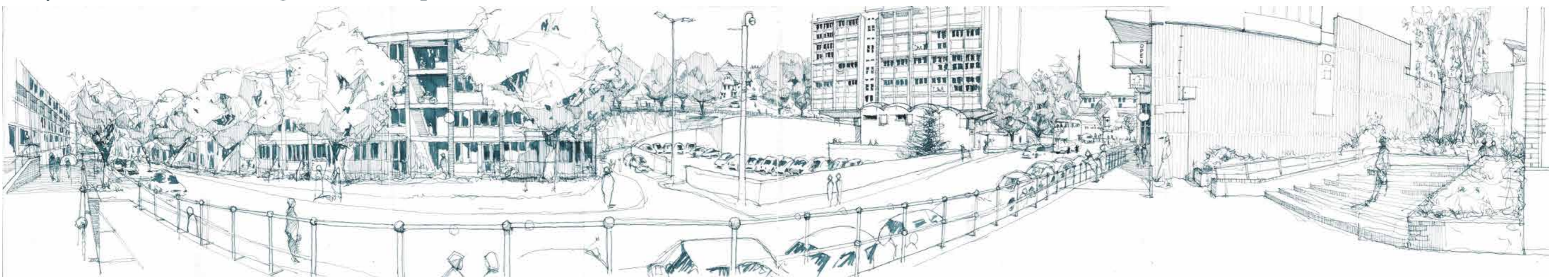
Shops and a new supermarket was raised by many residents as a major issue

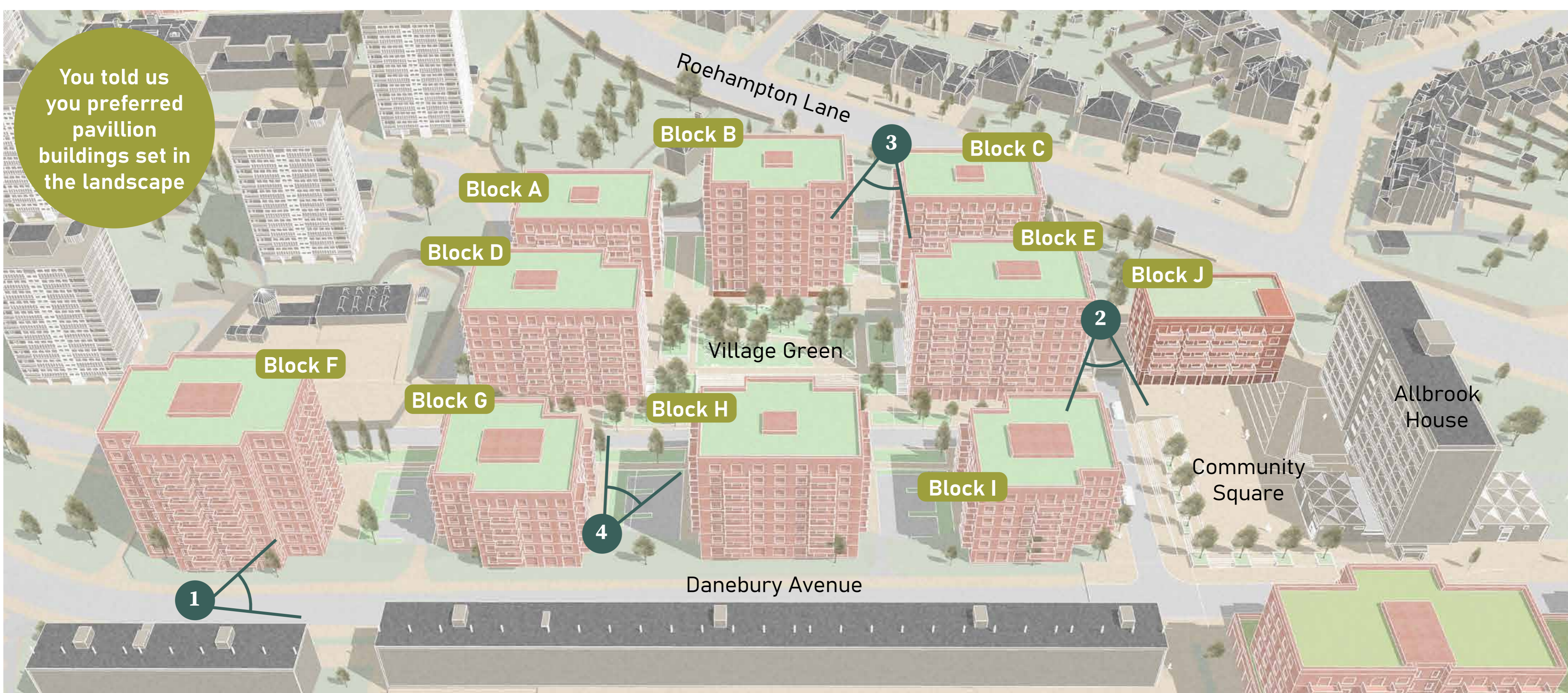
A place for community facilities was brought up as an opportunity for design

Photos of the model with movable buildings to test options



Early sketch of the existing Alton to help us understand the estate





The Danebury neighbourhood covers the new homes and a new village green, Allbrook House and a new public square.



1. View through Blocks G & H looking up Danebury Avenue



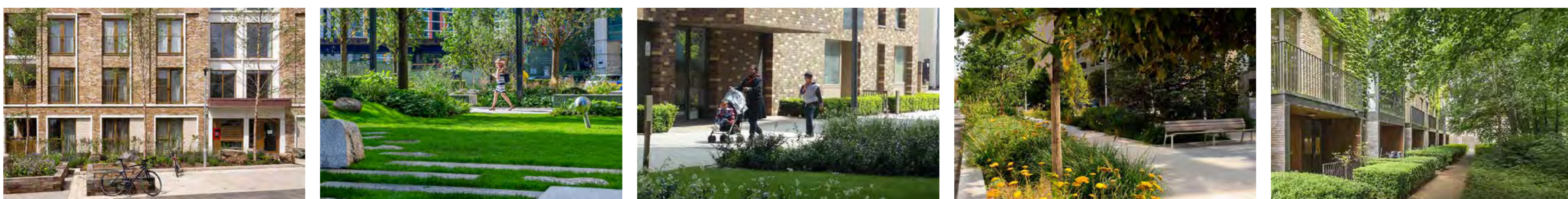
2. View between Blocks E & I down Harbridge Avenue



3. View from Blocks C & B across the village green to Danebury Avenue

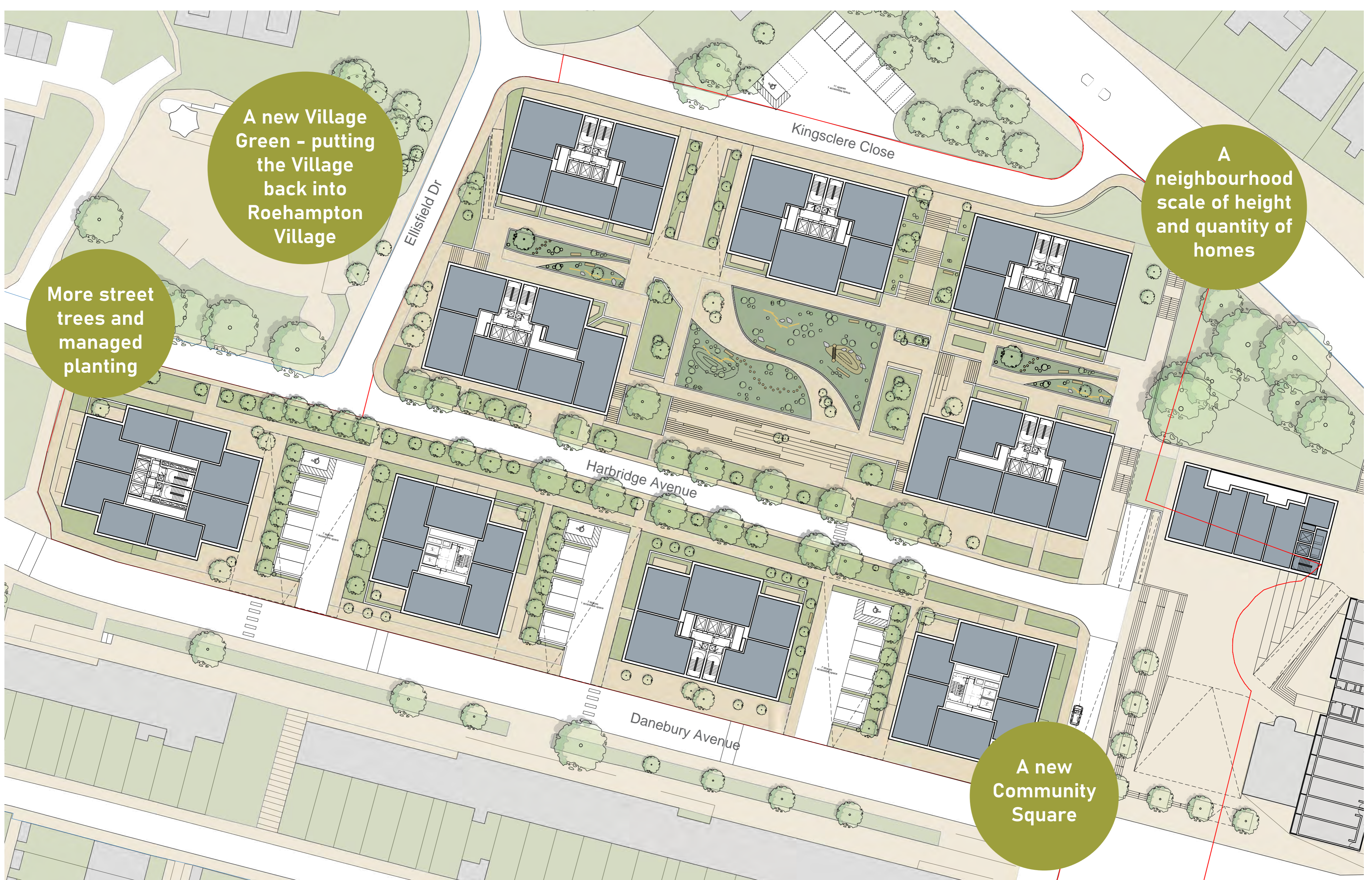


4. Looking towards the village green



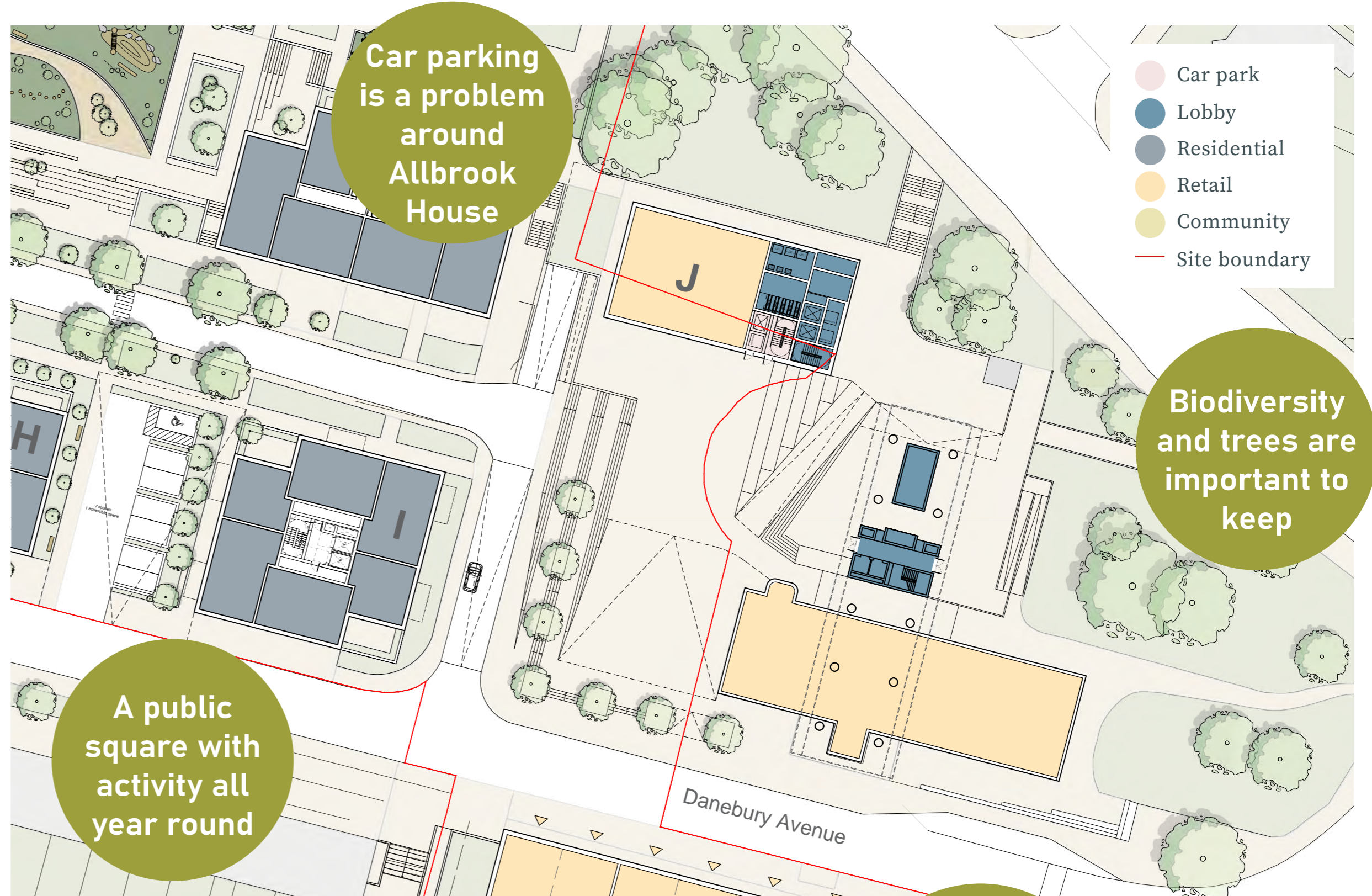
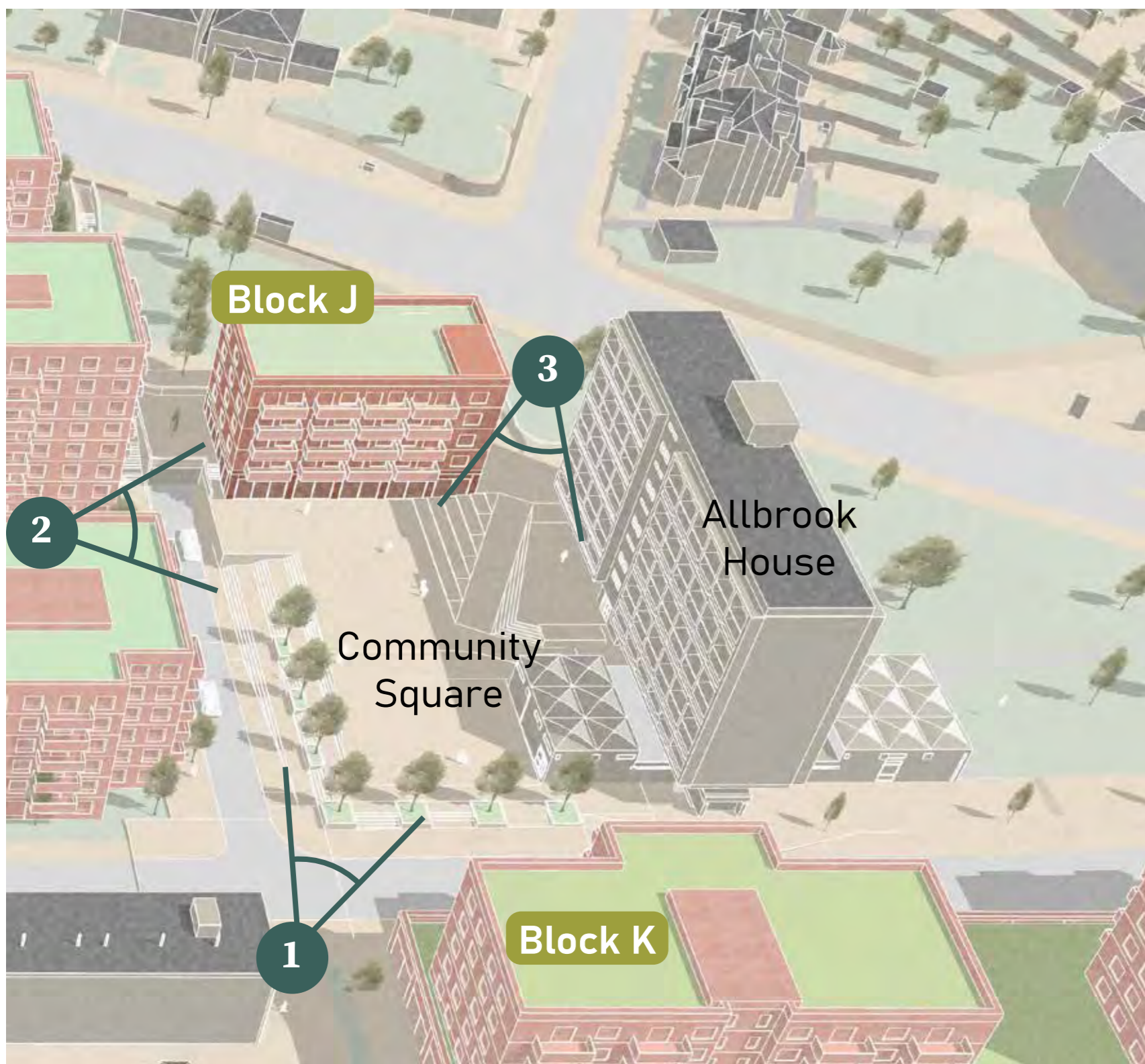


Ground Floor plan



Typical Floor plan





The area around Allbrook House, the existing library and car park will be transformed into a new Community Square, with car parking below. New homes, shops and a community or commercial building will sit where the existing library is now.

Ground Floor plan



Amphitheatre style Community Square for different activities throughout the year



Section showing the level challenges



1. Into the new square from Danebury Avenue

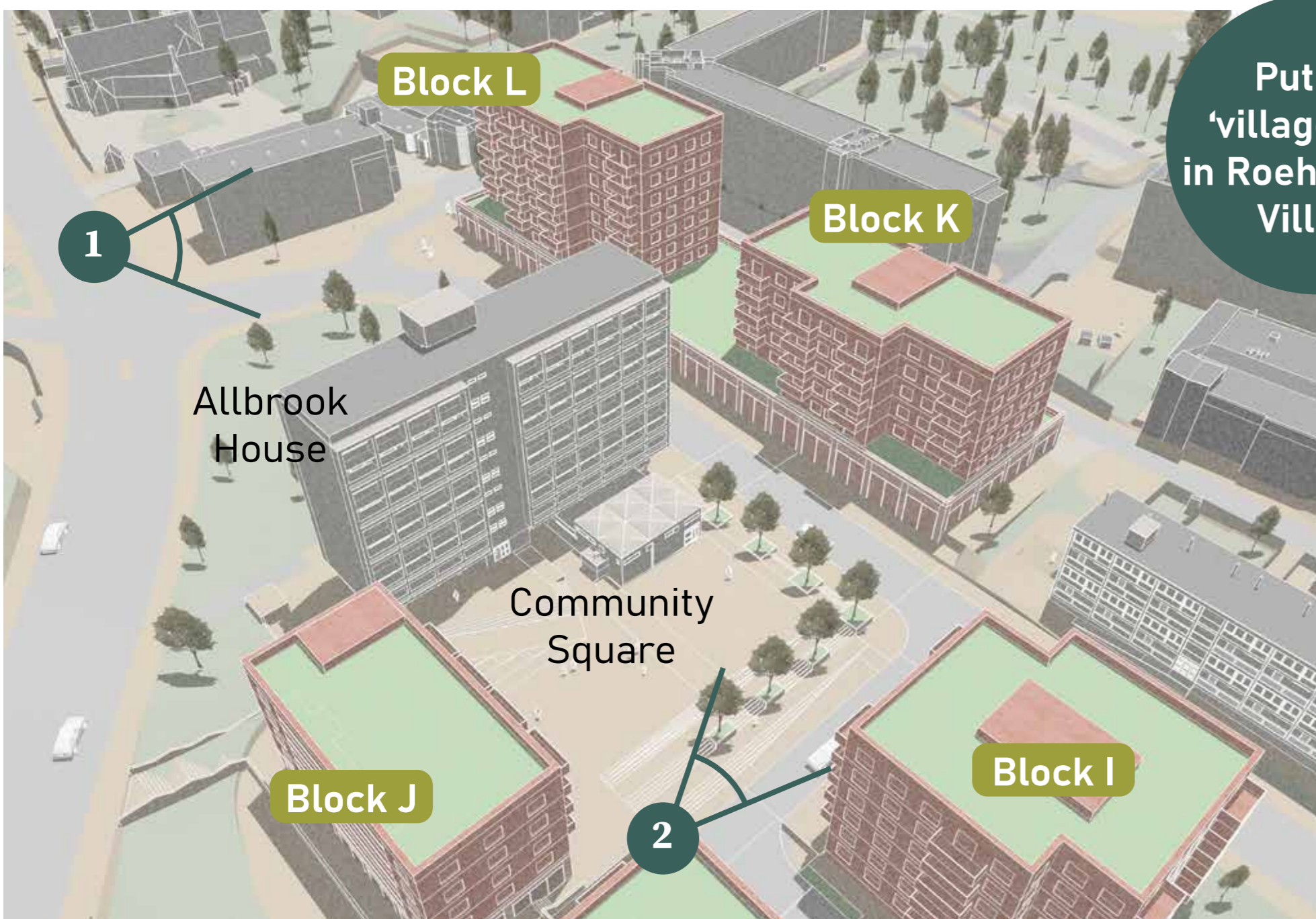


2. View from between Blocks E & I



3. Across the square towards the leisure centre





Put the 'village' back in Roehampton Village



Above all Alton needs a new affordable supermarket with fresh fruit and veg

The existing shops and housing above on Danebury Avenue will be replaced with a new supermarket, new shops and housing above.

Ground Floor plan



We'd like to see independent shops - not chains

We would like to look at the possibility of a street market or a seasonal marketplace



Typical Floor plan

There are so many nationalities here, it would be great to see more diversity in the shops



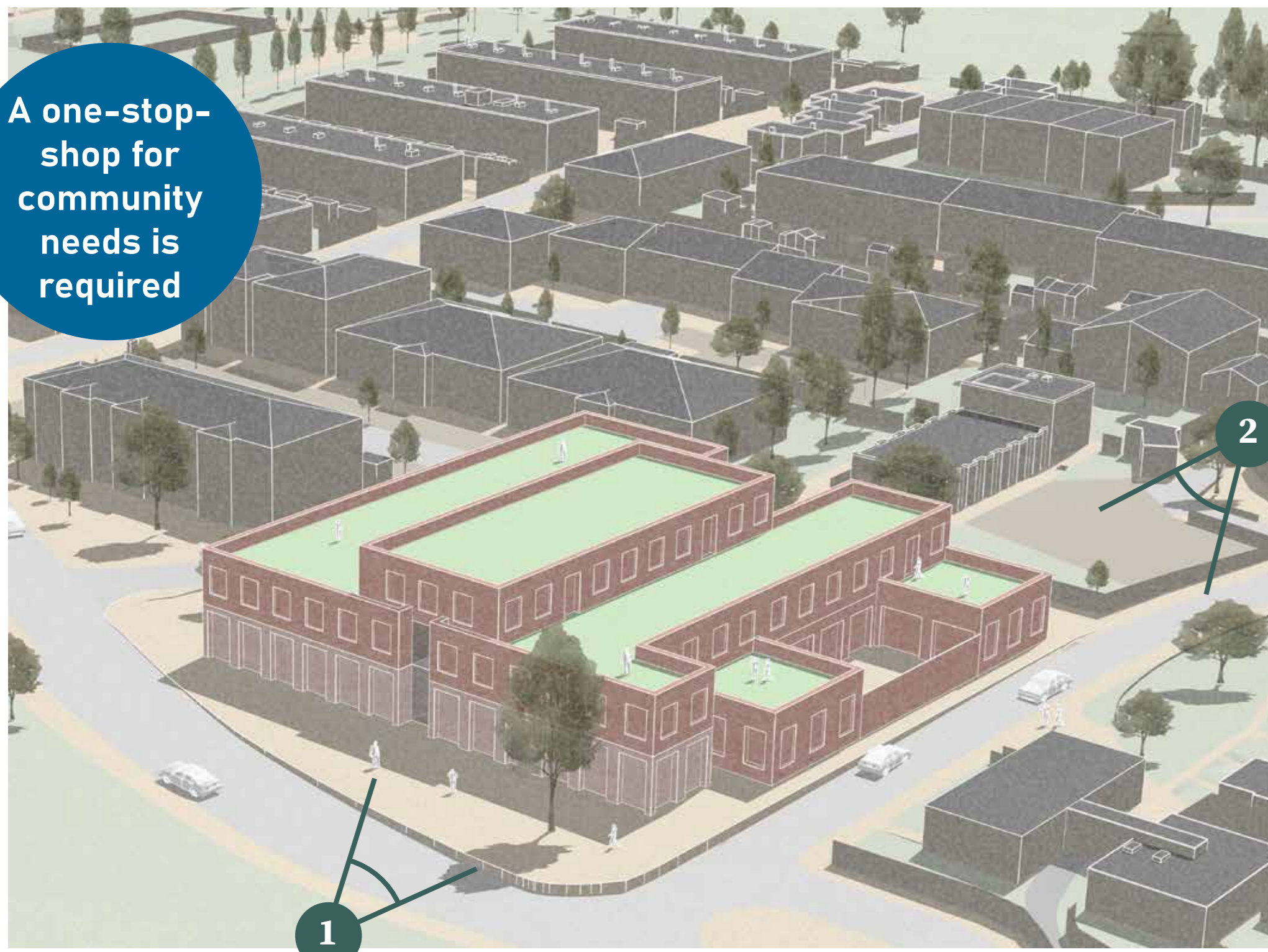
1. View of the new retail parade and housing above 2. Through the new square towards the parade

Existing shops on Danebury Avenue



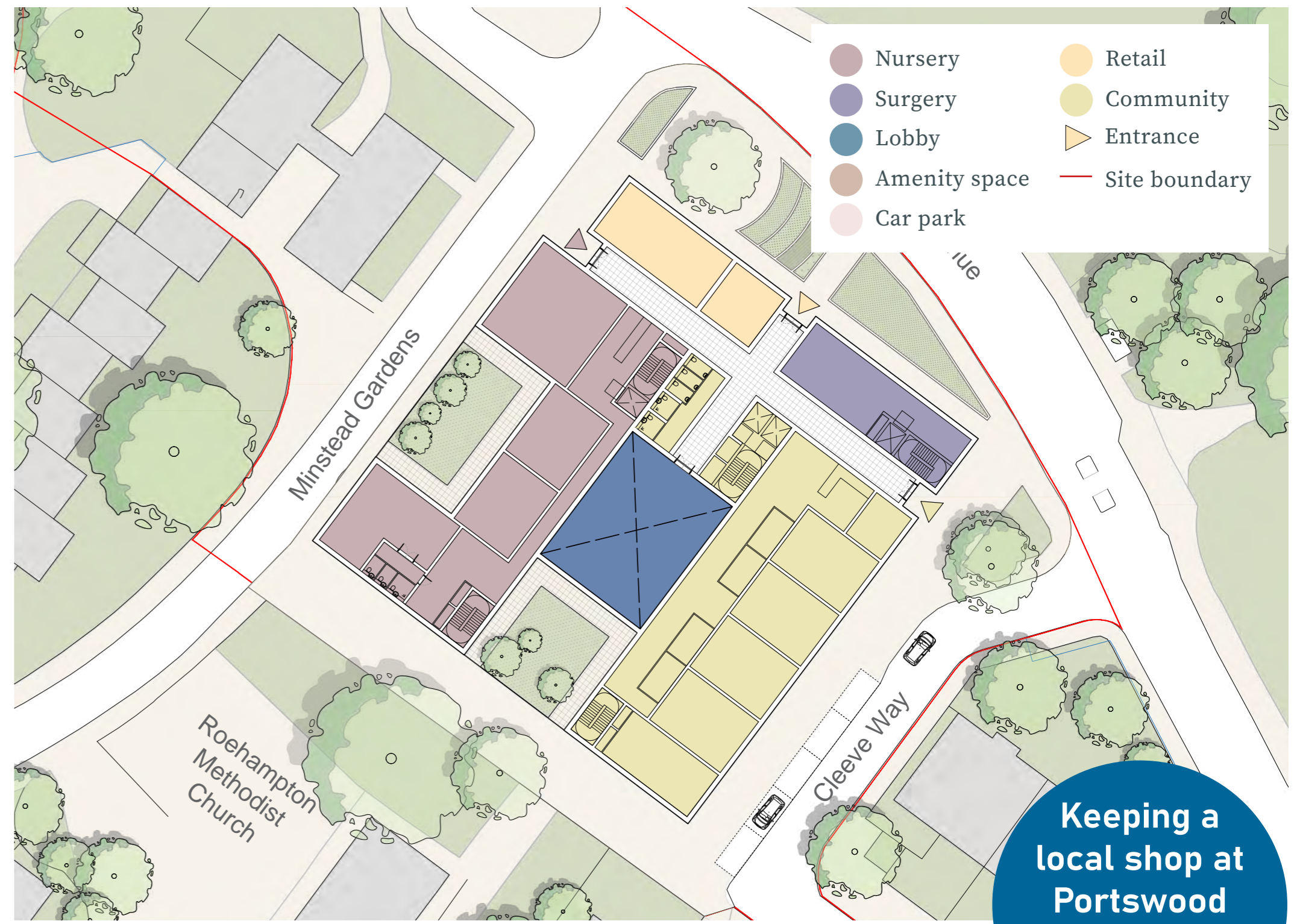
Existing shops on Danebury Avenue





A one-stop-shop for community needs is required

The new building at Portswood Place will provide essential community facilities: nursery, surgery, community space and shops.



Ground Floor plan

Keeping a local shop at Portswood is really important



Community services would be great located together



A space for the existing community groups is needed

Space for the nursery including outside space



First Floor plan

A bigger community meeting space is needed

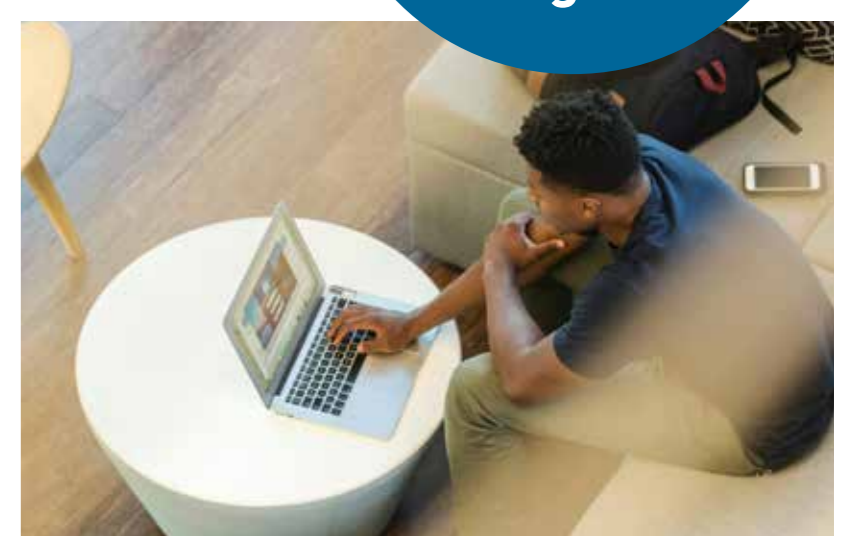
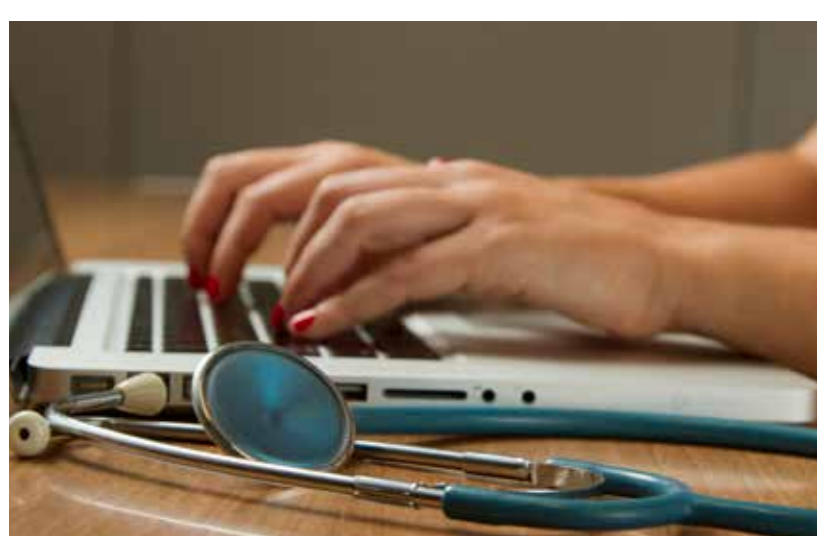


1. View across Downshire Fields



2. View past Minstead Gardens

A bigger Doctors, a chemist or a dentist would be good





New affordable homes are needed for the Alton



Ground Floor plan

Homes set in the landscape with retained trees are preferred

166 Roehampton Lane will be designed as a residential neighbourhood with a mix of houses and flats surrounded by green space



Sustainable homes with more affordable bills



Underground Floor plan

We want buildings that suit the environment - not too high

Parking is an issue across the estate



1. View from Roehampton Lane

Green streets and places for children to play



2. View looking up the hill towards the new buildings



A new gateway building

Our early public consultation with residents brought forward questions about Block A and why it was outside the larger development area that the housing renewal is looking at.

We listened to your comments and the Council decided to bring Block A back into the proposals to make sure that this once in a lifetime opportunity to create the best Alton we can, is not missed.

“What uses are going in to Block A and when is that going to be built?”

“Could we keep that retail block as it is and just improve the housing surrounding it?”

“Would like to see the plans for Block A again and understand the time frames for bringing forward.”

“Why is Block A outside the rest of the plans? That building has been left empty and boarded up for ages. When is it going to be demolished?”

“Will bringing Block A into the wider proposals delay it being built? We’re all very keen to see something happen on that site. It’s an eye-sore.”

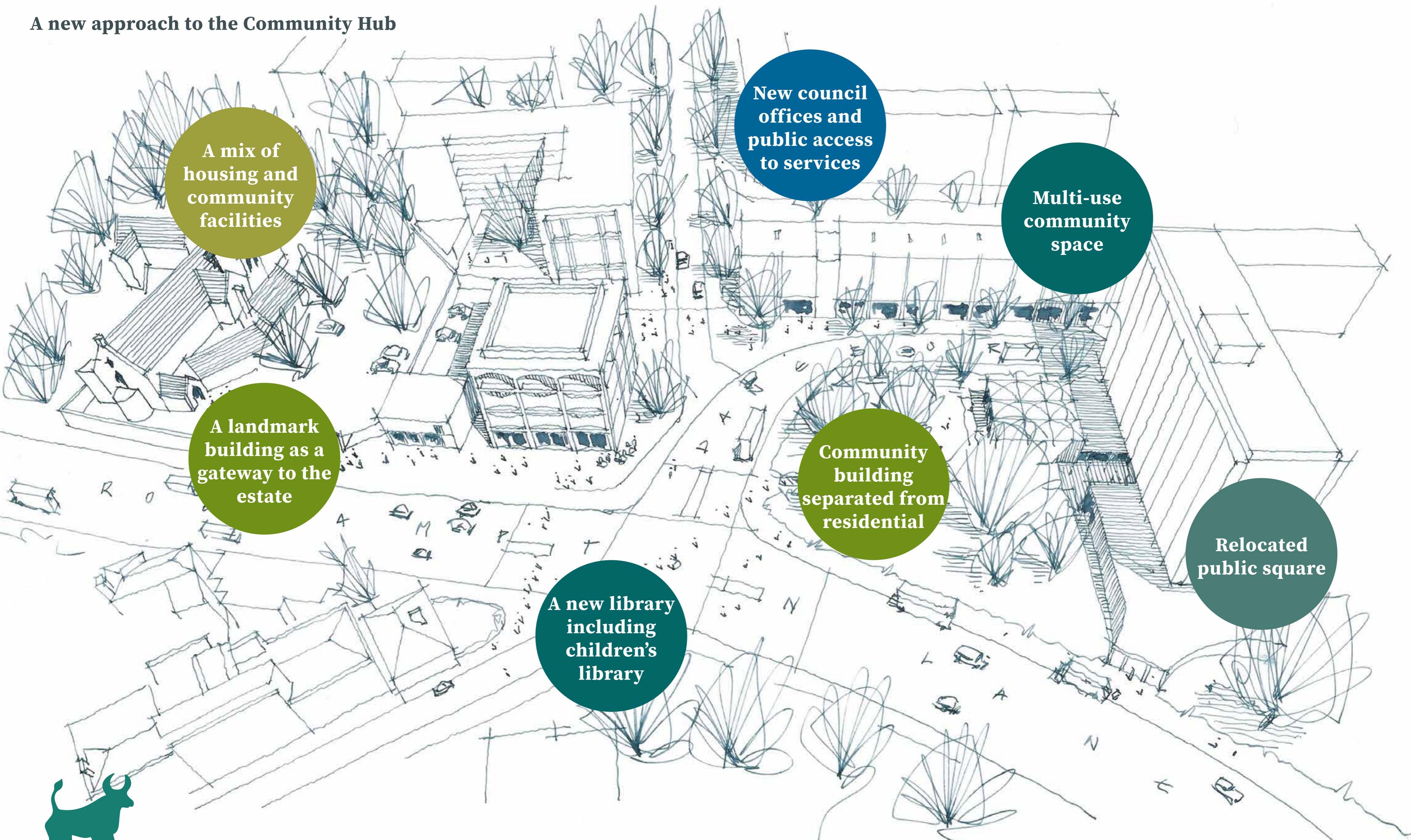
“We’re wondering what will happen to the Old Boys Club on the back of Block A. Could that be a clubhouse space in the centre of Danebury?”



What might the new building look like?



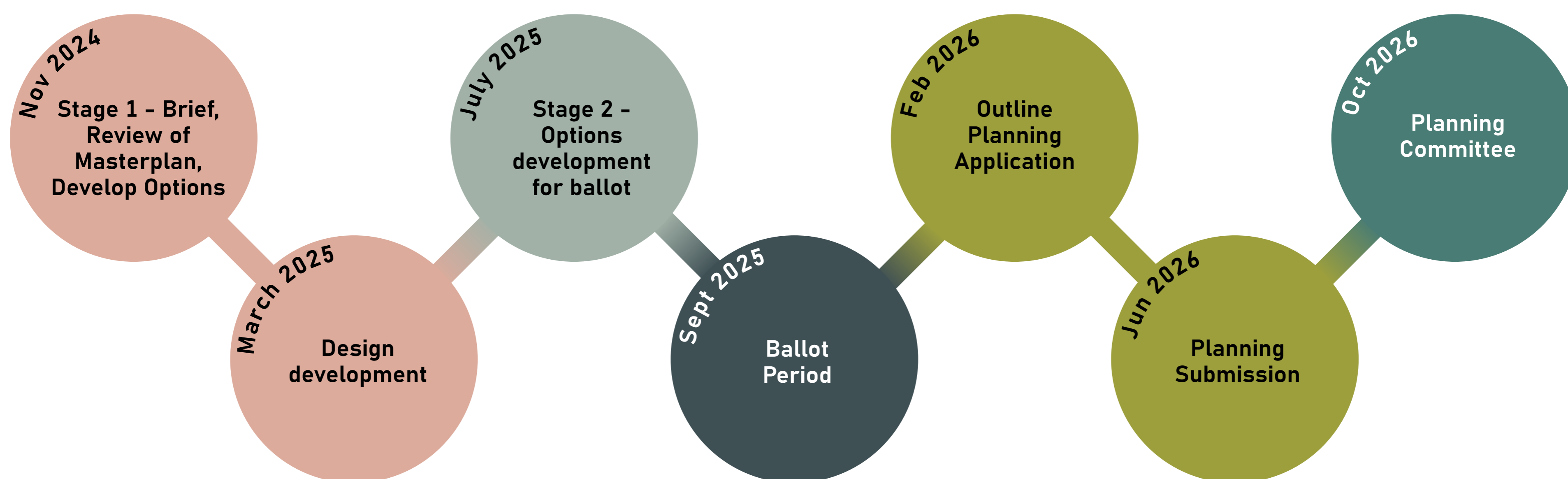
A new approach to the Community Hub



What is happening and when

We are working towards a Resident Ballot in September, where people will be asked to vote for the new proposals.

To get us to the Ballot, there are lots of strands of work to be done. The dates shown here show all the stages to get to the Ballot and then beyond that, should the Ballot result be successful.



Getting involved

Are you interested in getting more involved in the reshaping of the Alton?

Talk to us about being more involved. We are currently looking for people interested in joining a number of initiatives:

- Co-design projects
- Community Review Panel
- Access & Inclusivity Panel

Speak to one of our team if you are interested in one of these opportunities.

Keeping in touch

We need to hear from everyone who wants to have a say in shaping the estate.

You can contact us directly about the project - your ideas, worries, dreams!

We want to hear the good and more importantly - the bad, about where you live; where you go in Roehampton; how you travel; where you socialise - let us know your thoughts.

You can email us or come and see us at any future events - look out for details on the website.



www.wandsworth.gov.uk/roehampton



www.altonrenewal.co.uk/news



altonestate@hta.co.uk
Subject 'Alton - have your say!'



Twitter - @AltonRenewal

